

# FUTURA

THE NEW GENERATION  
WHEELCHAIR

Making the world a better place for everyone



BY: ALBERTO MANCARELLA

## WHY FUTURA?

In a future not so far away, it would be beautiful to see people with all kinds of disabilities living a life no longer dominated by constant **PHYSICAL BARRIERS**, inaccessible stairs, bulky cars, expensive devices, and a dependency on a charged battery to move around. This inspired me to design an innovative wheelchair, **FUTURA**, that means the future. **FUTURA** is a wheelchair that promotes inclusion in all aspects of daily life. It allows the user to regain daily activities considering various technical features, cost, and size limitations. **FUTURA** is **DESIGNED TO GIVE CONFIDENCE TO THE USER**.



## INTERSECTION BETWEEN MANUAL AND POWER WHEELCHAIR

**FUTURA**'s futuristic design is at the intersection between a manual wheelchair as well as a power wheelchair, providing the best of both worlds. **FUTURA** has two different parts: the motor and the chair itself, which allow the user to assemble or disassemble the system in a fraction of time for easy **TRANSPORTATION** and to fit it easily in any car.



## NO ASSISTANCE REQUIRED!

**FUTURA** allows power wheelchair users to be completely independent in their daily lives. A powered **WHEELCHAIR** allows a user to traverse around faster and more independently, but it is very heavy. Getting in and out of the car without assistance, loading the chair and the **MOTOR**, and finally, **DRIVING** the car safely in a manual wheelchair is much easier, but **THERE IS NO MOTOR** in a manual wheelchair. To have the best of both worlds, the **POWERED WHEELCHAIR COMPONENT IS REMOVEABLE!**



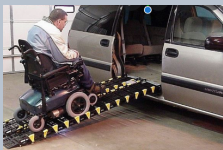
## UNLIMITED VEHICLE CHOICES

As of today, for long distances, the users of power wheelchairs need bulky vans with special modifications like ramps or lifts. **FUTURA** gives people affected by a disability, whether a driver or a passenger, an unlimited range of choices about which vehicle to use.

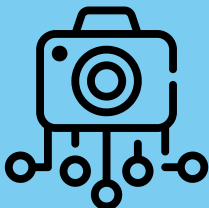




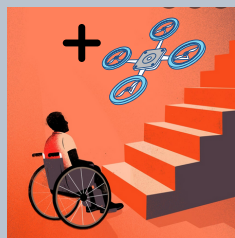
**MOTORIZED-WHEELCHAIRS: BULKY RAMPS!**  
**MANUAL WHEELCHAIRS: EASY!**



## ARTIFICIAL INTELLIGENCE



Artificial Intelligence, with its algorithm, gives a chance to someone with a serious medical condition, like someone who lost his hand or leg or can not see to use the autonomous driver and navigate with FUTURA in every corner of the world without fear. Everybody deserves to live a life that does not depend on a family member or caregiver. FUTURA has many AI camera sensors built into the wheelchair LIKE OF THOSE IN A SELF-DRIVING CAR to avoid obstacles and to ULTIMATELY GIVE A SENSE OF SECURITY TO THE USER.

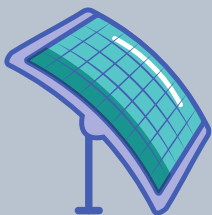


## DRONES TO CLIMB STAIRS

FUTURA's design emphasizes the possibility for the wheelchair user to climb stairs and climb them in a fraction of time. SUPPLEMENTING ITS AI SYSTEM, FUTURA has a couple of small but powerful drones located under the bar that connects the chair with the motor. They propel the wheelchair to rise a few centimeters above the ground to climb the stairs and overcome any physical obstacle.

## SWITCHING FROM A SITTING TO A STANDING POSITION

A mechanism of standing position lets people in wheelchairs reach objects located at a certain height, like taking a book from a shelf or a utensil from a kitchen cabinet. This feature could improve self-esteem and confidence for people with disabilities.



## FLEXIBLE SOLAR-POWERED BATTERY

Beyond a battery with a limited amount of life, FUTURA has an extra solar-powered battery with the panel located in the backrest to guarantee a daily full of autonomy.



The FUTURA wheelchair must be a tool that must not make the disabled person feel imprisoned in a cage and consequently face psychological and emotional distress but let him free to explore the world independently without barriers.



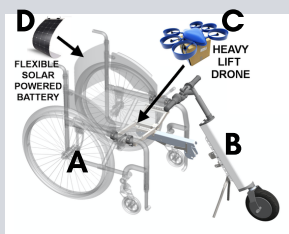
# USING FUTURA

**NO BUTTONS/SWITCHES  
(EXCEPT FOR THE POWER BUTTON  
AND ACCELERATOR/BRAKES)**

**A - THE MANUAL WHEELCHAIR  
FRAME IS THE HUB OF FUTURA. IT  
CONTROLS ALL OF THE OTHER  
COMPONENTS USING AN AI CHIP  
BUILT INTO IT. IT RECOGNIZES  
WHAT THE USER NEEDS WHEN THE  
USER NEEDS IT. NO INPUT FROM  
THE USER IS REQUIRED!**

**B - REMOVABLE POWERED  
WHEELCHAIR COMPONENT ALLOWS  
USER TO OPERATE THE  
WHEELCHAIR IN A POWERED MODE!  
WHEELCHAIR CAN TRAVEL UP TO  
30MPH WITH UNLIMITED RANGE,  
THANKS TO ITS SOLAR-POWERED  
BATTERY. THERE IS AN ON BUTTON  
AS WELL AS AN ACCELERATOR  
SWITCH. THERE ARE UP TO 10  
DIFFERENT SPEED OPTIONS THAT  
THE USER CAN CHOOSE FROM, AS  
WELL AS AN AUTOMATIC MODE  
WHERE THE A.I. CAN DECIDE THE  
BEST SPEED!**

**FUTURA = AI + MANUAL WHEELCHAIR +  
POWERED WHEELCHAIR + DRONE + SOLAR-  
POWERED**



**C - THE HEAVY LIFT DRONES,  
CONTROLLED FROM THE MANUAL  
WHEELCHAIR FRAME, HAS THE  
ABILITY TO LIFT THE WHEELCHAIR  
AND UP TO 2000 POUNDS OF  
WEIGHT! THE DRONES ARE  
CHARGED USING THE SOLAR-  
POWERED SYSTEM.**

**D - SOLAR-POWERED WHEELCHAIR  
COMPONENT CHARGES ALL OF THE  
COMPONENTS OF THE  
WHEELCHAIR, INCLUDING THE AI  
SYSTEM FROM THE MAIN FRAME,  
THE DRONES, AS WELL AS THE  
MOTOR ITSELF. IT ALLOWS USER  
TO OPERATE THE WHEELCHAIR IN A  
POWERED MODE! WHEELCHAIR CAN  
TRAVEL UP TO 30MPH WITH  
UNLIMITED RANGE, THANKS TO  
THIS SPECIAL SOLAR-POWERED  
BATTERY.**