

Pooh Bear Plant Care USER MANUAL



COMES WITH:

- Pooh Bear
- Water Can
- Fertilizer Pellets
- Mystery Plant

Your will receive a mystery indoor plant and a Pooh Bear that knows how often it needs fertilizer and water. All mystery plants will be low maintenance.



MYSTERY PLANT



PROGRAMMED CARE/ALERT FEATURE

Pooh Bear will be programmed to alert the child every time their specific plant needs food or water. Pooh Bear lights up and says "water please" or "food please" once every minute until the task is done. For example, if the plant needs water twice a week, Pooh Bear will light up and speak accordingly.

When the child gives Pooh Bear water, he sprays it onto the plant (like a sprinkler), spinning in a half circle. When the child feeds him "pellets," Pooh Bear drops them out the other end into the plant



WATER AND FERTILIZER

This product is designed with a high regard for sustainability. Its positive output shows that it contributes to "design for economics."

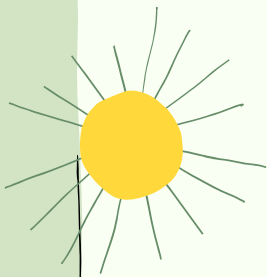
ENJOY



POOH BEAR PLANT CARE

A FUN WAY FOR CHILDREN TO LEARN INDEPENDENCE,
RESPONSIBILITY, AND SELF-CONFIDENCE

By: Audrey Suarez



WHAT IS IT FOR?

Pooh bear is designed to help children flourish through taking care of a living thing.



WHAT IS THE MEDIUM?

In this design, the medium would be the plant. Pooh Bear acts as "training wheels" to help children learn to care for the environment.

WHO WOULD IT AFFECT?

Pooh Bear Plant Care will promote flourishing in children and future generations. It will teach children the values of sustainability and caring for nature, which can improve society's overall attitude towards the environment. As a result, this can significantly benefit future generations who will be faced with the consequences of how we treat our earth today.

HOW DOES IT MAKE PEOPLE FEEL?

By keeping their plant alive, children feel accomplished, greater self-esteem, confident in their own abilities, and purposeful. They achieve eudaimonic happiness through preserving nature. All of these qualities can help them feel important as they see themselves contributing to their family.



WHAT MAKES IT DISTINGUISHABLE?

This design differs from other children's plant inventions such as the Chia Pet because of its reminders. Since Pooh Bear actually alerts/reminds the children to water the plant, younger children can be trusted to keep the plant alive. With a Chia Pet, young children can easily forget to water their plant, which can result in it dying and the child feeling sad or like they failed. Or, you might find parents having to water the plant and remind the child to. However, with Pooh Bear, children will learn independence and care for their plant without any aid from their parents because Pooh Bear has them covered!